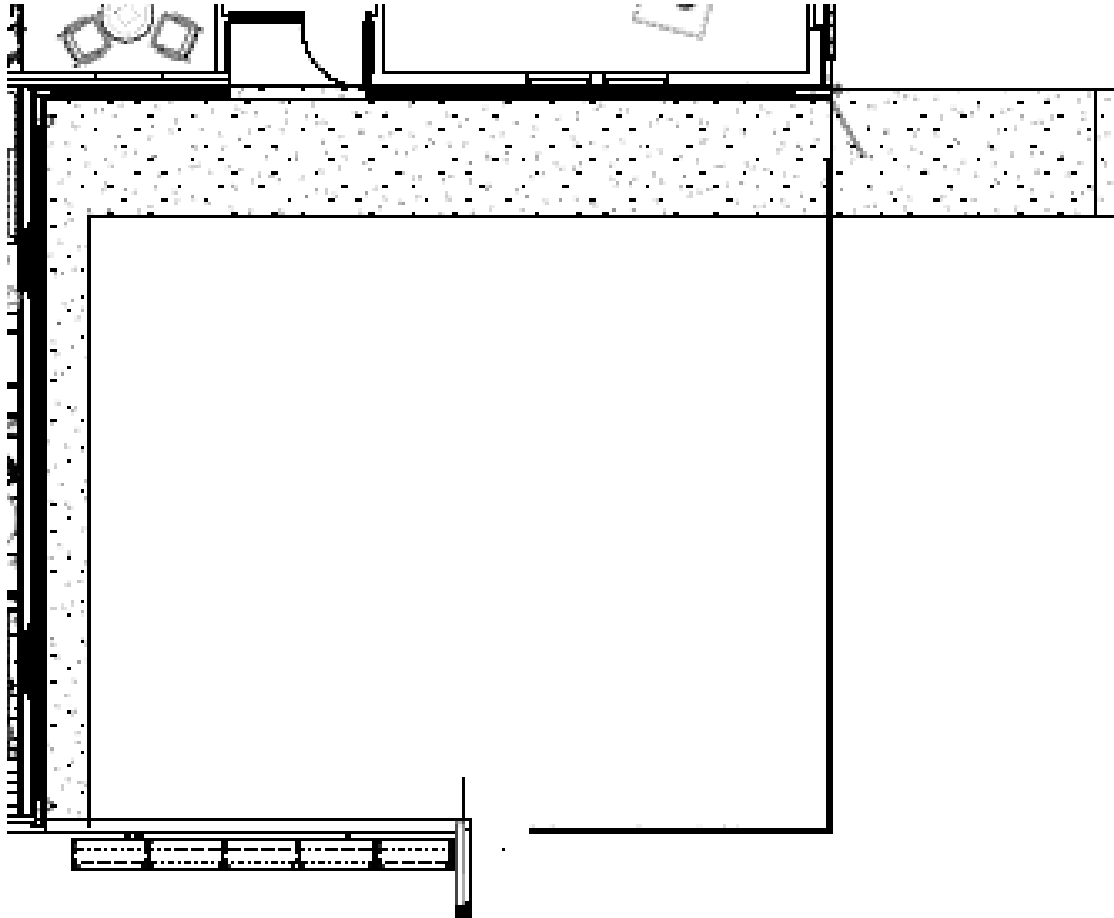


**Williamson County Children's Advocacy Center  
Outdoor Play and Therapy Space**

**Attachment #2a – Part One Area**



The outdoor area is an 875-square-foot area surrounded by a concrete pathway and a 6-foot wooden fence. The conceptual design is to add a poured-in-place rubberized surface to prevent injuries and a low playground structure for children to engage in play while receiving services related to the disclosures of physical and sexual abuse.

Sample site plan

