

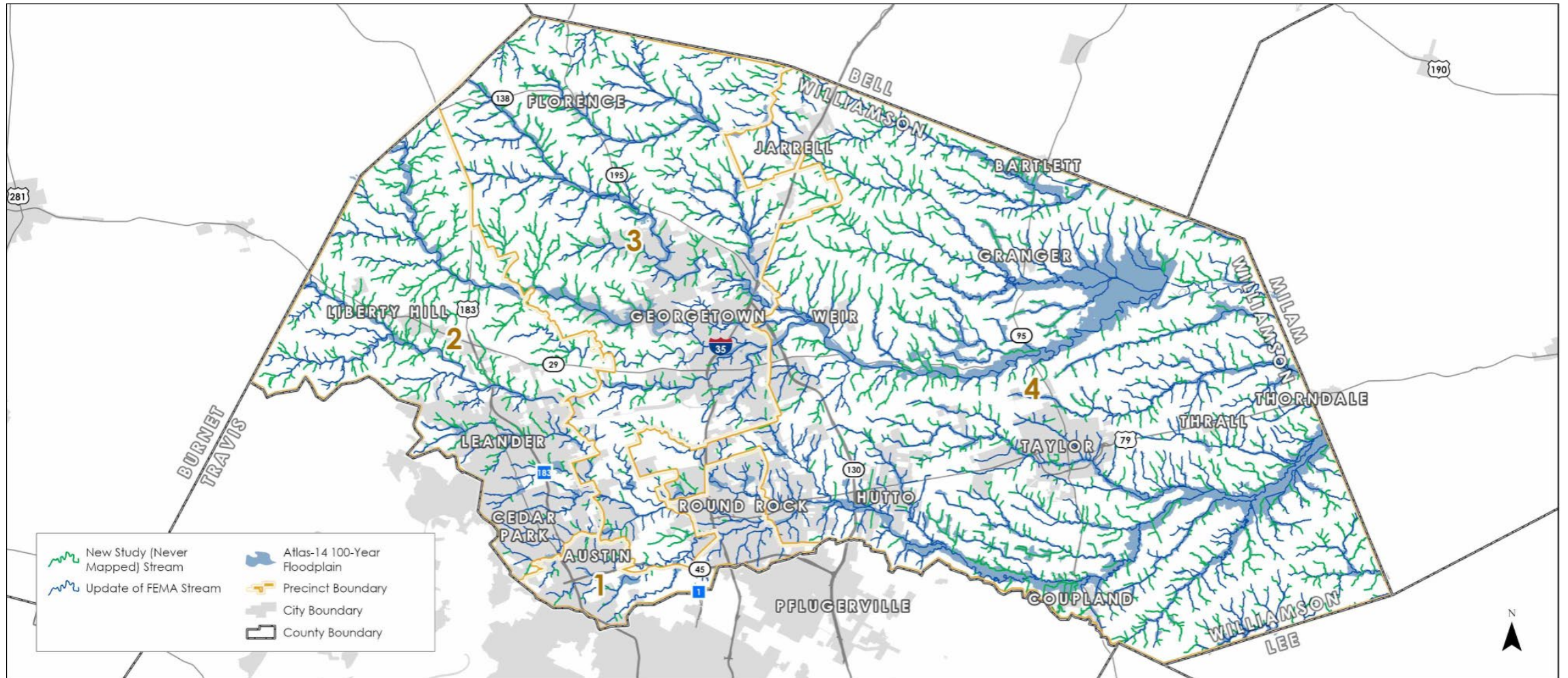
WILLIAMSON COUNTY

ATLAS 14

FLOODPLAIN STUDY

MAY 21, 2024

ATLAS 14



■ National Oceanic and Atmospheric Administration (NOAA) released new Atlas 14 rainfall data in 2018

INCREASE IN FEDERAL HISTORICAL RAINFALL DATA

The Atlas 14 program added the rainfall data from 1994 to 2017 to the rainfall data statically analyzed by NOAA.

In general, the County's 100-year event precipitation ranges have shifted from 8-10 inches to 10-12 inches.

ABOUT THE STUDY

- Williamson County partners with Texas Water Development Board for Atlas 14 study in 2020
 - State of Texas issued grants through Texas Water Development Board to encourage Counties to study the impacts of the heavier rainfall and potential flood exposure.



San Gabriel River 2018 Flood



City of Georgetown 2018 Flood

PUBLIC OUTREACH

UPCOMMING PUBLIC MEETINGS (5:00 - 7:00 PM)

MAY 29TH	Williamson County Georgetown Annex	100 Wilco Way, Room 226, Georgetown
MAY 30 TH	Williamson County Jester Center	1801 E Old Settlers Blvd, Round Rock
JUN 3 RD	The Retreat Activity Center in Sun City	1220 Cattleman Drive, Georgetown
JUN 4 TH	East Williamson County Higher Education Center	1600 Innovation Blvd, Hutto
JUN 5 TH	Dickey Givens Center	1015 E MLK Jr Blvd, Taylor
JUN 6 TH	Williamson County Annex,	350 Discovery Blvd., Cedar Park
JUN 10 TH	Walburg Community Center	4000 FM 972, Georgetown
JUN 17 TH	St. Dominic Savio Catholic School	9300 Neenah Avenue, Austin
JUN 11 TH	Sonterra MUD Clubhouse	510 Sonterra Blvd. Jarrell

WEB VIEWER

[Atlas 14 | Williamson County, TX \(wilcotx.gov\)](https://wilcotx.gov)

FOR MORE QUESTIONS CONTACT:

ROB FAUBION

(512) 200-4963

WILCO@RIFELINE.COM