
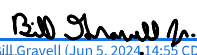




## Summary Agreement for Renewal of Williamson County Contract

<b>Contract Number:</b>	T1289	<b>Department:</b>	PARKS DEPARTMENT								
<b>Vendor Name:</b>	HEART OF TEXAS LANDSCAPE & IRRIGATION CO.										
<b>Purpose/Intended Use of Product or Service (summary):</b>											
RENEWAL #2 FOR PARKS LANDSCAPING											
<b>Type of Contract:</b>	RFP	<b>Start Date:</b>	10/01/2024								
<b>Purchasing Contact:</b>	KIM CHAPPIUS	<b>End Date:</b>	09/30/2025								
<b>Department Contact:</b>	RUSSELL FISHBECK (PARKS DIRECTOR)										
<ul style="list-style-type: none"> <li>• <b>Williamson County wishes to extend this bid/proposal for the same pricing, terms, and conditions as the existing contract.</b></li> <li>• <b>PLEASE INCLUDE THE FOLLOWING:</b> <ul style="list-style-type: none"> <li>- COMPLETED 1295 FORM; AND</li> <li>- RENEWED INSURANCE CERTIFICATE IF IT WAS REQUIRED IN BID/PROPOSAL.</li> </ul> </li> <li>• <b>Extend Contract for the 3rd of four (4) one (1) year renewal option periods:</b> <table style="margin-left: 20px; border: none;"> <tr> <td style="padding-right: 20px;">Renewal Option Period 3</td> <td>October 1, 2023 – September 30, 2024</td> </tr> <tr> <td>Renewal Option Period 2</td> <td>October 1, 2023 – September 30, 2024</td> </tr> <tr> <td>Renewal Option Period 1</td> <td>October 1, 2022 – September 30, 2023</td> </tr> <tr> <td>Initial Contract Period</td> <td>October 1, 2020 – September 30, 2022</td> </tr> </table> </li> </ul>				Renewal Option Period 3	October 1, 2023 – September 30, 2024	Renewal Option Period 2	October 1, 2023 – September 30, 2024	Renewal Option Period 1	October 1, 2022 – September 30, 2023	Initial Contract Period	October 1, 2020 – September 30, 2022
Renewal Option Period 3	October 1, 2023 – September 30, 2024										
Renewal Option Period 2	October 1, 2023 – September 30, 2024										
Renewal Option Period 1	October 1, 2022 – September 30, 2023										
Initial Contract Period	October 1, 2020 – September 30, 2022										
<b>BY SIGNING BELOW, THE PARTIES AGREE TO THE TERMS OF EXTENSION SET FORTH AS STATED ABOVE</b>											
Vendor <u>Heart of Texas Landscape and Irrigation</u>		Williamson County, 710 Main St., Georgetown, TX 78626									
Name <u>Dustin Finch</u>		Bill Gravel, Jr									
Title <u>Account Manager</u>		Williamson County Judge									
Signature <u></u>		Signature <u></u>									
Date <u>5/9/2024</u>		Date _____									

# T1289-Landscape Services for Williamson County Parks Renewal #3

Location	Current Price	Price FY25
General Services Sports Fields Turf	\$20,655.00	\$21,275.00
Southwest Williamson County Regional Park	\$102,600.00	\$105,678.00
Williamson County Regional Park - Cricket Field	\$1,924.00	\$1,982.00
Williamson County Regional Park – Commons Area	\$2,025.00	\$2,086.00
Champion Park located at 3830 Brushy Creek Road, Cedar Park, TX 78613	\$12,825.00	\$13,347.00
Brushy Creek Trail – Bridge over Brushy Creek at Twin Lakes Park to HWY 183A Bridge and East end of dam at Brushy Creek Lake Park to Champion Park	\$3,156.00	\$3,251.00
Lake Creek Trail located at 9505 Braes Valley, Austin, TX 78729	\$7,375.00	\$7,596.00
County Road 175 median, Round Rock, TX 78681	\$6,868.00	\$7,074.00
Berry Springs Park & Preserve located 1801 CR 152, Georgetown, TX 78626	\$10,935.00	\$11,263.00
Williamson County Regional Park – Disc Golf Course (fairways & pathways only)	\$3,645.00	\$3,754.00
Brushy Creek Trail Alternate Route – NW of Champion Park and along Brushy Creek Road	\$743.00	\$765.00
Expo Center located at 5850 Bill Pickett, Taylor, TX 76574	\$10,632.00	\$10,951.00
River Ranch County Park at 194 Reveille Way, Liberty Hill, TX 78642	\$29,700.00	\$30,591.00
Williamson County Regional Park – Fire Break	\$8,100.00	\$8,343.00

Expo Center RV Park	\$5,400.00	\$5,562.00
Berry Spring East Grove	\$2,025.00	\$2,086.00
Berry Spring Irrigated Trees	\$405.00	\$0.00
<b>***Added Locations***</b>		
Berry Springs Park and Preserve		\$4,692.00
BLACKLAND – Irrigated Trees		\$2,700.00
SWRP – Field #12 (mimic Alt. A)		\$1,982.00
CHAMPION – West Fence Line		\$360.00
<b>TOTAL</b>	<b>\$229,013.00</b>	<b>\$245,338.00</b>

**Schedule 1**  
**Williamson County Parks Department**

**Mowing/Service Frequencies by Location and Month**

**GENERAL SERVICE FOR SOUTHWEST WILLIAMSON COUNTY REGIONAL PARK**

	Dec	Jan	Feb	Mar	Apr	May	Jun	Jul	Aug	Sep	Oct	Nov	Tot
Supervisory Inspection	0	0	1	4	4	5	5	4	5	4	4	2	38
Full-service visits by crew	0	0	1	4	4	5	5	4	5	4	4	2	38

<b>Sports Fields/Turf</b>	Dec	Jan	Feb	Mar	Apr	May	Jun	Jul	Aug	Sep	Oct	Nov	Tot
Mow, Edge, Trim (common 1-5)	0	0	0	4	8	9	9	8	9	9	8	4	68
Mow, Edge, Trim (tif 6-11)	0	0	0	4	8	9	9	8	9	9	8	4	68
Mow, Edge, Trim (softball 1-2)	0	0	0	4	8	9	9	8	9	9	8	4	68
Pest Inspection	0	0	0	4	4	5	4	5	4	4	5	2	37

<b>Trees, Shrubs, Beds</b>	Dec	Jan	Feb	Mar	Apr	May	Jun	Jul	Aug	Sep	Oct	Nov	Tot
Clean basins/berms	0	0	1	4	4	5	4	5	4	4	5	2	38
Pruning shrubs (hedge)	0	0	0	1	1	1	1	1	1	1	1	1	9
Weed control	0	0	1	4	4	5	4	5	4	4	5	2	38
Pest Inspection	0	0	0	2	2	2	2	2	2	2	2	1	17

<b>Debris Disposal</b>	Dec	Jan	Feb	Mar	Apr	May	Jun	Jul	Aug	Sep	Oct	Nov	Tot
Grass clippings	0	0	1	4	5	4	4	5	4	4	5	2	38
Twigs, branches	0	0	1	4	5	4	4	5	4	4	5	2	38
Leaves	0	0	1	4	5	4	4	5	4	4	5	2	38

<b>Parking Lots</b>	Dec	Jan	Feb	Mar	Apr	May	Jun	Jul	Aug	Sep	Oct	Nov	Tot
Gutter/curb blowing	0	0	1	4	4	5	5	4	5	4	4	2	38
Spray cracks	0	0	0	0	2	2	2	2	2	2	2	0	14

<b>Irrigation</b>	Dec	Jan	Feb	Mar	Apr	May	Jun	Jul	Aug	Sep	Oct	Nov	Tot
Visual inspection	0	0	1	4	4	5	5	4	5	4	4	2	38

**Williamson County Parks Department**  
**Mowing/Service Frequencies by Location and Month**

**ALTERNATE BIDS**

<b>Alternate A (mow, edge, trim)</b>	<b>Dec</b>	<b>Jan</b>	<b>Feb</b>	<b>Mar</b>	<b>Apr</b>	<b>May</b>	<b>Jun</b>	<b>Jul</b>	<b>Aug</b>	<b>Sep</b>	<b>Oct</b>	<b>Nov</b>	<b>Tot</b>
Cricket Field	0	0	1	4	4	5	5	4	5	4	4	2	38

<b>Alternate B (mow, edge, trim)</b>	<b>Dec</b>	<b>Jan</b>	<b>Feb</b>	<b>Mar</b>	<b>Apr</b>	<b>May</b>	<b>Jun</b>	<b>Jul</b>	<b>Aug</b>	<b>Sep</b>	<b>Oct</b>	<b>Nov</b>	<b>Tot</b>
Commons Area	0	0	1	3	4	4	5	3	2	3	4	1	30

<b>Alternate C (mow, edge, trim)</b>	<b>Dec</b>	<b>Jan</b>	<b>Feb</b>	<b>Mar</b>	<b>Apr</b>	<b>May</b>	<b>Jun</b>	<b>Jul</b>	<b>Aug</b>	<b>Sep</b>	<b>Oct</b>	<b>Nov</b>	<b>Tot</b>
Champion Park	0	0	1	4	4	5	5	4	5	4	4	2	38
Brushy Creek Trail – 2.7 mi (3 ac.)	0	0	1	2	3	3	2	2	2	2	3	2	22
Lake Creek Trail	0	0	1	4	4	5	4	5	4	4	5	2	38

<b>Alternate D (mow, edge, trim)</b>	<b>Dec</b>	<b>Jan</b>	<b>Feb</b>	<b>Mar</b>	<b>Apr</b>	<b>May</b>	<b>Jun</b>	<b>Jul</b>	<b>Aug</b>	<b>Sep</b>	<b>Oct</b>	<b>Nov</b>	<b>Tot</b>
CR 175 medians	0	0	1	2	3	3	2	2	2	2	3	2	22

<b>Alternate E (mow, edge, trim)</b>	<b>Dec</b>	<b>Jan</b>	<b>Feb</b>	<b>Mar</b>	<b>Apr</b>	<b>May</b>	<b>Jun</b>	<b>Jul</b>	<b>Aug</b>	<b>Sep</b>	<b>Oct</b>	<b>Nov</b>	<b>Tot</b>
Berry Springs Grove (32 acres)	0	0	0	1	2	2	1	1	1	1	2	1	12
<b>ADD – (2) mowings</b>	<b>0</b>	<b>0</b>	<b>0</b>	<b>1</b>	<b>2</b>	<b>2</b>	<b>2</b>	<b>2</b>	<b>1</b>	<b>1</b>	<b>2</b>	<b>1</b>	<b>14</b>

<b>Alternate F (mow, edge, trim)</b>	<b>Dec</b>	<b>Jan</b>	<b>Feb</b>	<b>Mar</b>	<b>Apr</b>	<b>May</b>	<b>Jun</b>	<b>Jul</b>	<b>Aug</b>	<b>Sep</b>	<b>Oct</b>	<b>Nov</b>	<b>Tot</b>
Disc golf course	0	0	0	2	4	4	1	1	1	1	3	1	18

<b>Alternate G (mow, edge, trim)</b>	<b>Dec</b>	<b>Jan</b>	<b>Feb</b>	<b>Mar</b>	<b>Apr</b>	<b>May</b>	<b>Jun</b>	<b>Jul</b>	<b>Aug</b>	<b>Sep</b>	<b>Oct</b>	<b>Nov</b>	<b>Tot</b>
Brushy Creek Trl. alternate route	0	0	1	2	3	3	2	2	2	2	3	2	22

<b>Alternate H (mow, edge, trim)</b>	<b>Dec</b>	<b>Jan</b>	<b>Feb</b>	<b>Mar</b>	<b>Apr</b>	<b>May</b>	<b>Jun</b>	<b>Jul</b>	<b>Aug</b>	<b>Sep</b>	<b>Oct</b>	<b>Nov</b>	<b>Tot</b>
Expo Center	1	1	2	4	4	4	4	2	2	2	2	2	30

<b>Alternate I (mow, edge, trim)</b>	<b>Dec</b>	<b>Jan</b>	<b>Feb</b>	<b>Mar</b>	<b>Apr</b>	<b>May</b>	<b>Jun</b>	<b>Jul</b>	<b>Aug</b>	<b>Sep</b>	<b>Oct</b>	<b>Nov</b>	<b>Tot</b>
River Ranch County Park	0	0	1	2	3	3	2	2	2	2	3	2	22

<b>Alternate J (mow, edge, trim)</b>	<b>Dec</b>	<b>Jan</b>	<b>Feb</b>	<b>Mar</b>	<b>Apr</b>	<b>May</b>	<b>Jun</b>	<b>Jul</b>	<b>Aug</b>	<b>Sep</b>	<b>Oct</b>	<b>Nov</b>	<b>Tot</b>
Regional Park Fire Break	0	0	0	0	0	0	1	0	0	0	0	1	2

<b>Alternate K (mow, edge, trim)</b>	<b>Dec</b>	<b>Jan</b>	<b>Feb</b>	<b>Mar</b>	<b>Apr</b>	<b>May</b>	<b>Jun</b>	<b>Jul</b>	<b>Aug</b>	<b>Sep</b>	<b>Oct</b>	<b>Nov</b>	<b>Tot</b>
Expo RV Park	1	1	2	3	3	2	2	1	1	2	1	1	20

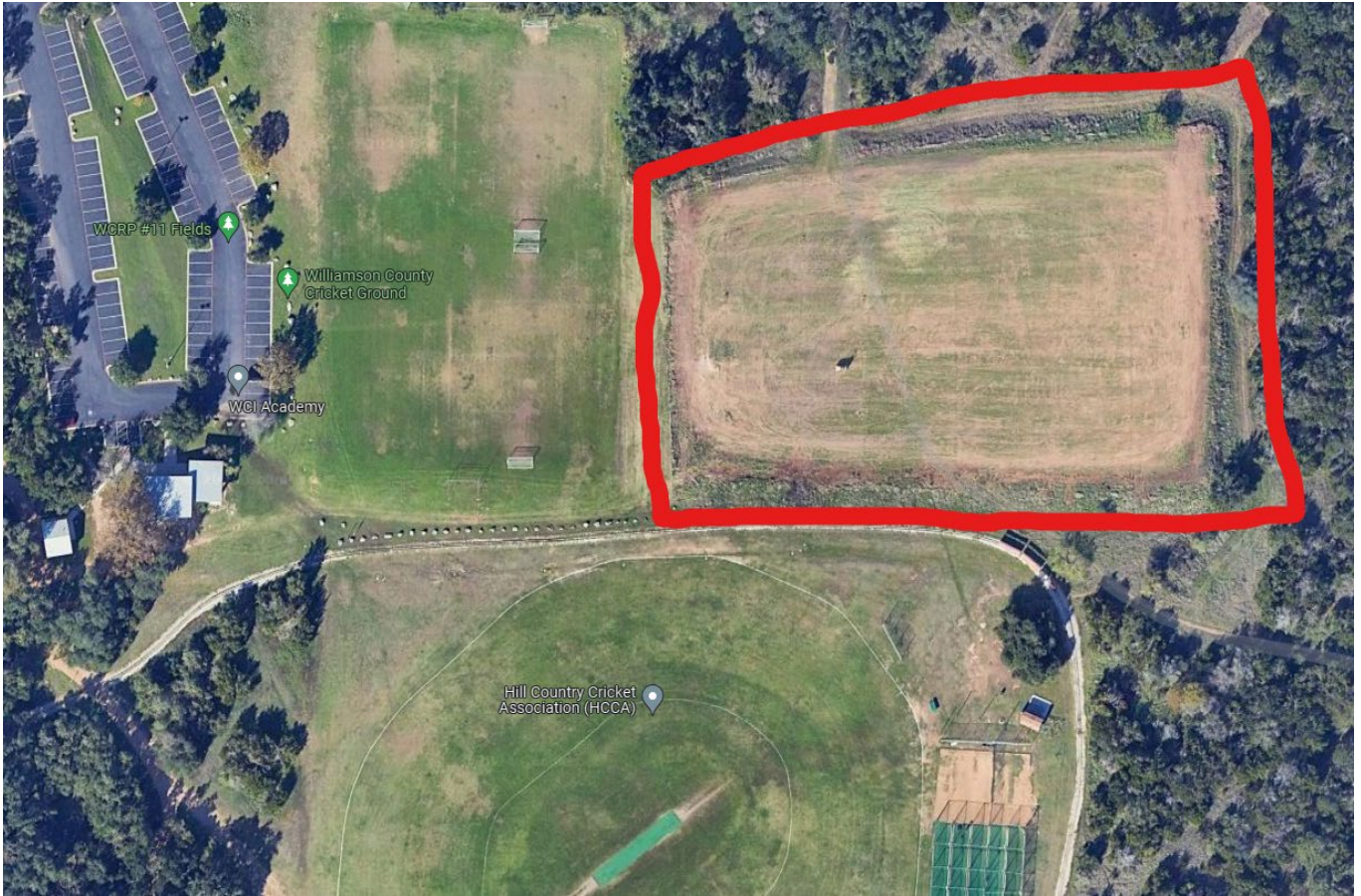
<b>Alternate L (mow, edge, trim)</b>	<b>Dec</b>	<b>Jan</b>	<b>Feb</b>	<b>Mar</b>	<b>Apr</b>	<b>May</b>	<b>Jun</b>	<b>Jul</b>	<b>Aug</b>	<b>Sep</b>	<b>Oct</b>	<b>Nov</b>	<b>Tot</b>
Berry Springs East Grove - 5 acres	0	0	0	1	2	2	1	1	1	1	2	1	12
Add (2) mowings	0	0	0	1	2	2	2	2	1	1	2	1	14

<b>Alternate M (mow, edge, trim)</b>	<b>Dec</b>	<b>Jan</b>	<b>Feb</b>	<b>Mar</b>	<b>Apr</b>	<b>May</b>	<b>Jun</b>	<b>Jul</b>	<b>Aug</b>	<b>Sep</b>	<b>Oct</b>	<b>Nov</b>	<b>Tot</b>
Berry Springs irrigated – 4 acres	0	0	0	0	0	0	1	0	0	0	0	1	2
Discontinue	0	0	0	0	0	0	0	0	0	0	0	0	0

\*\*\* Locations not referenced in original schedule: \*\*\*

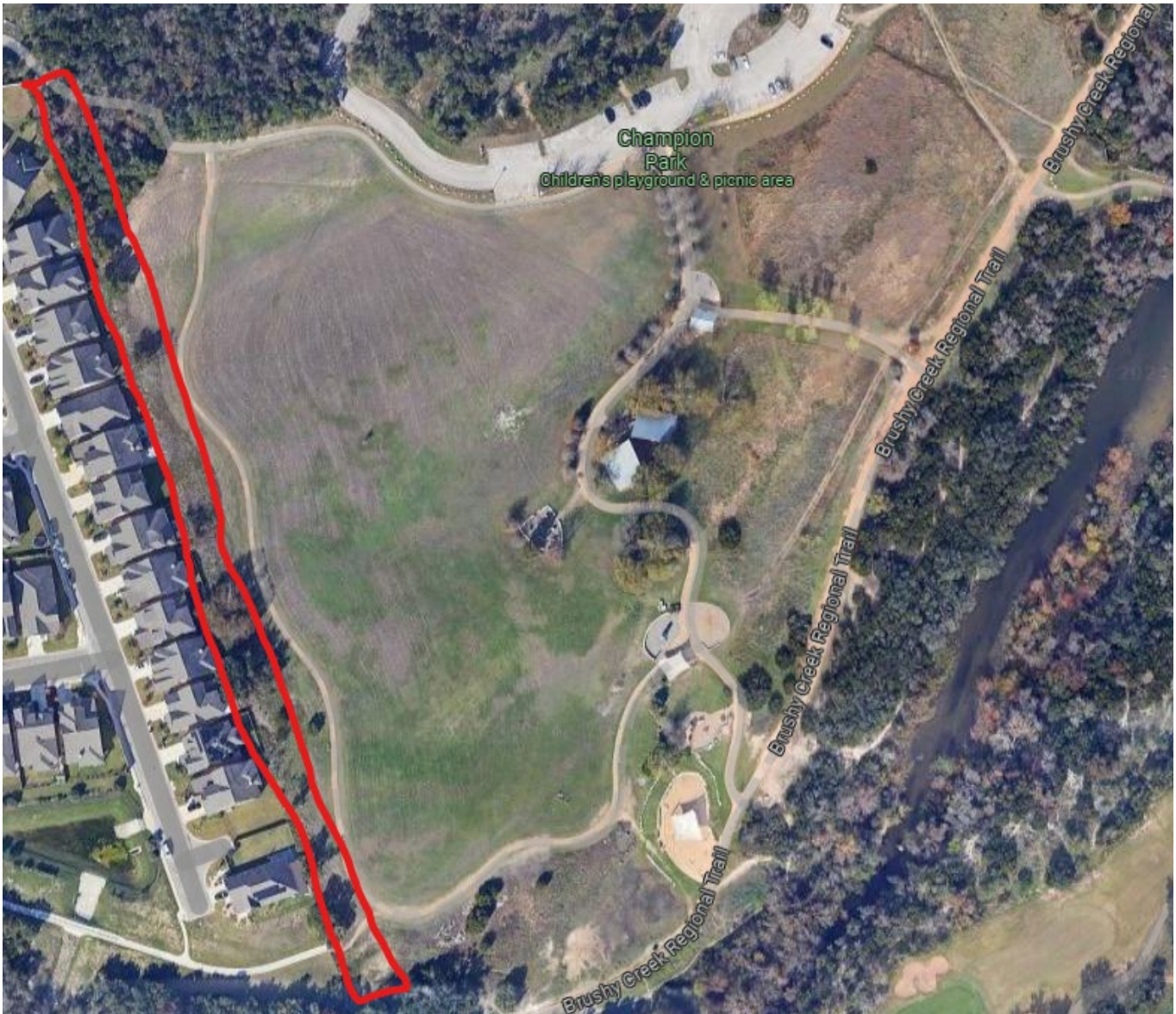
<b>ADD SERVICE (mow, edge, trim)</b>	<b>Dec</b>	<b>Jan</b>	<b>Feb</b>	<b>Mar</b>	<b>Apr</b>	<b>May</b>	<b>Jun</b>	<b>Jul</b>	<b>Aug</b>	<b>Sep</b>	<b>Oct</b>	<b>Nov</b>	<b>Tot</b>
BSPP due to Construction (P559)	?	?	1	4	4	4	4	2	1	1	2	1	24
BLACKLAND – Irrigated Trees	0	0	0	0	0	0	1	0	0	0	0	1	2
SWRP – Field #12 (mimic Alt. A)	0	0	1	4	4	5	5	4	5	4	4	2	38
CHAMPION – West Fence Line	0	0	0	0	0	0	1	0	0	0	0	1	2

# SWRP – Field #12





# CHAMPION – West Fence Line





# BLACKLAND – Irrigated Trees



BSPP – P559

All Areas



## Improved Areas





## Campground, Entrance & Parking

